

RTU587 Typical Models

DIGITAL INPUTS

Quantity: see table
 Interface: TED32
 Type: passive
 Voltage: 24 Vdc to 220 Vdc
 Both contacts available
 Terminals for 2.5 mm² cables
 Resolution: 1 ms
 Combined software and hardware filter
 Functions: simple input, double input, multiple input, counter

DIGITAL OUTPUTS

Interface: TSR16
 Contacts rated: 5 A @ 125 Vdc
 Normally open contact
 Functions: simple pulse, combined pulse
 Configurable pulse time
 Terminal for 2.5 mm² cable

ANALOG INPUTS

Integrated transducer TIN521
 Measurement inputs
 Current: 5
 Voltage: 2
 4 to 20 mA signal

Multifunction transducer: ION 7300
 Active and reactive power
 Active and reactive energy
 Current: 2 or 3
 Voltage: 2 or 3
 Frequency
 Harmonics

Connection: 4, 3 or 2 wires
 Current terminals: short circuit
 Voltage terminals: section terminal strips

DC voltage transducer TTC1
 Input 110 Vdc
 Output 4 to 20 mA

COMMUNICATIONS

Serial ports
 Ethernet port
 Protocols : IEC 870-5-101, 104, Modbus, DNP 3.0
 Options: fiber optic, CDPD, radio

CPU

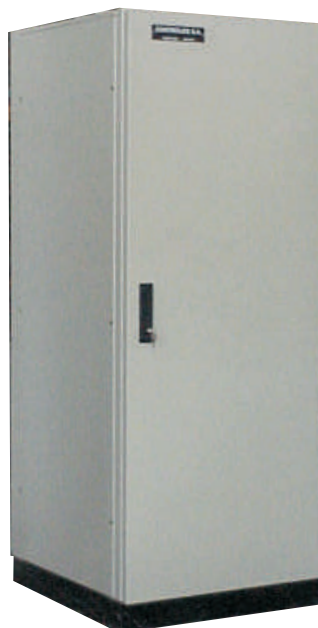
PC compatible in a card
 Flash Eprom program
 Static RAM
 Watchdog

SOFTWARE

RTU program, model RTUQM
 Real time operating system

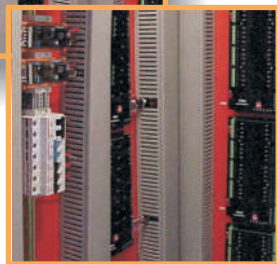
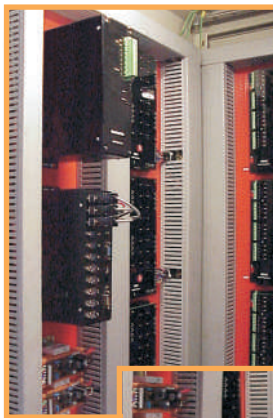
ACCESORIES

- Communications interface
- GPS
- Communications protocol
- Temperature measurement
- Protection relays connection
- PLC ability or local logic

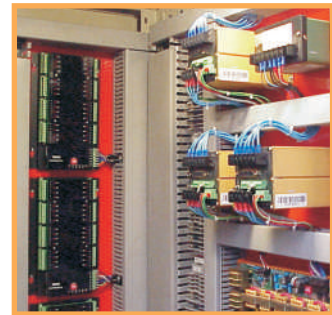


RTU587 Typical Models

Model	Large
Digital inputs	352
Digital outputs	64
Current measurements (I)	40
Voltage measurements (V)	19
Active power measurements (W)	3
Reactive power measurements (VA)	3
DC voltage measurement	1
Serial ports	12
Ethernet port	1
Enclosure: height; width; depth	2 x 0.8 x 0.8 m
Software	RTUQM



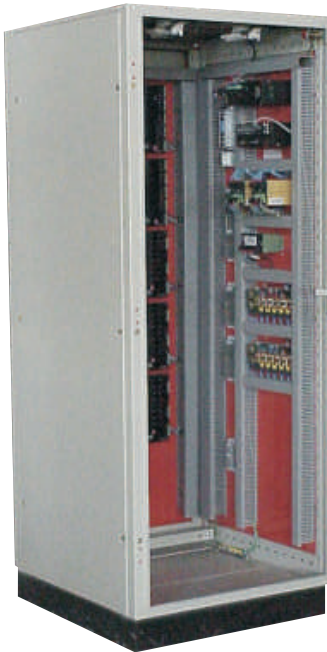
Lateral izquierdo



Lateral derecho

RTU587 Typical Models

Model	Medium
Digital inputs	224
Digital outputs	48
Current measurements (I)	16
Voltage measurements (V)	10
Active power measurements (W)	2
Reactive power measurements (VA)	2
DC voltage measurement	1
Serial ports	12
Ethernet port	1
Enclosure: height; width; depth	2 x 0.8 x 0.8 m
Software	RTUQM



Lateral derecho



RTU587 Typical Models

Model	Small
Digital inputs	64
Digital output	16
Current measurements (I)	8
Voltage measurements (V)	5
Active power measurements (W)	1
Reactive power measurements (VA)	1
DC voltage measurement	1
Serial ports	12
Ehernet port	1
Enclosure: height; width; depth	1 x 0.8 x 0.3 m
Software	RTUQM

