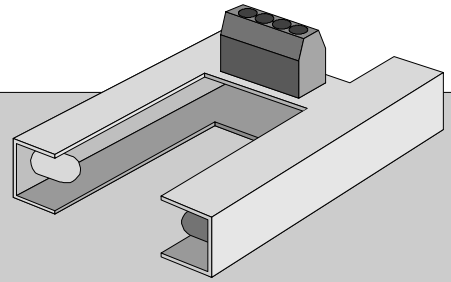


POSITION SENSORS

SP31, SP51 y SP3151



PRINCIPLE OF OPERATION

Infrared barrier

Signal Output

Transistor Collector with a 180 ohm series resistor

Output current: 5 mA max.

Response time: less than 2 ms

Precision (length): +/- 1 mm

STATUS INDICATOR

Red LED

POWER INPUT

Voltage: 24 Vdc Nom. min.: 22 Vdc
max.: 30 Vdc

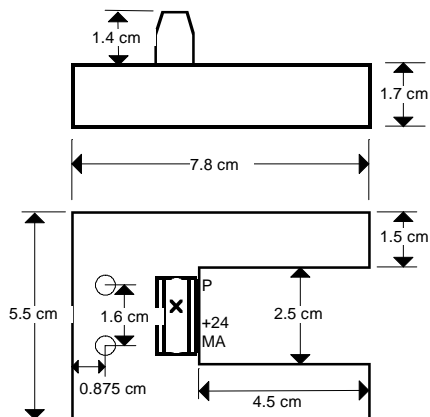
Maximum load: 30 mA @ 24Vdc

FLAGS (VANES)

Minimum length: 5 cm

Material: any opaque sheet

MODELS: SP51: active: 24 Vdc
SP31: active: \emptyset V
SP3151: dual output



MADE IN URUGUAY

OPERATION

These infrared sensors are intended to sense flags (or vanes) that define the position at the hoistway.

While a flag is not sensed the output signal is active and the LED is on.

When a flag interrupts the barrier the LED goes off and the output enters a high impedance state.

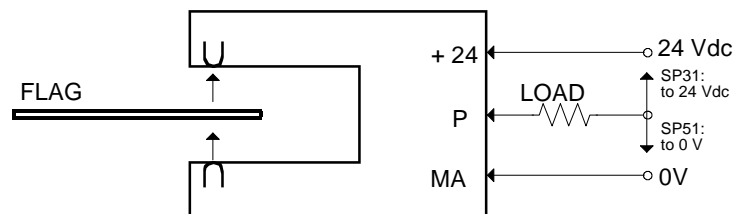
CARACTERISTICS

- Compact
- Reliable
- Economical
- Solid state
- Exact leveling
- Easy to install and to adjust
- Low maintenance

INSTALLATION

The sensors are installed on top of the car.

The flags are fixed to the guides and adjusted to obtain the desired deceleration and leveling positions.



CONTROLES S.A.

Av. Rivera 3314
11300 Montevideo
Uruguay

Tel.: +598 2 622 0651

Fax: +598 2 622 2048

info@controles.com

www.controles.com